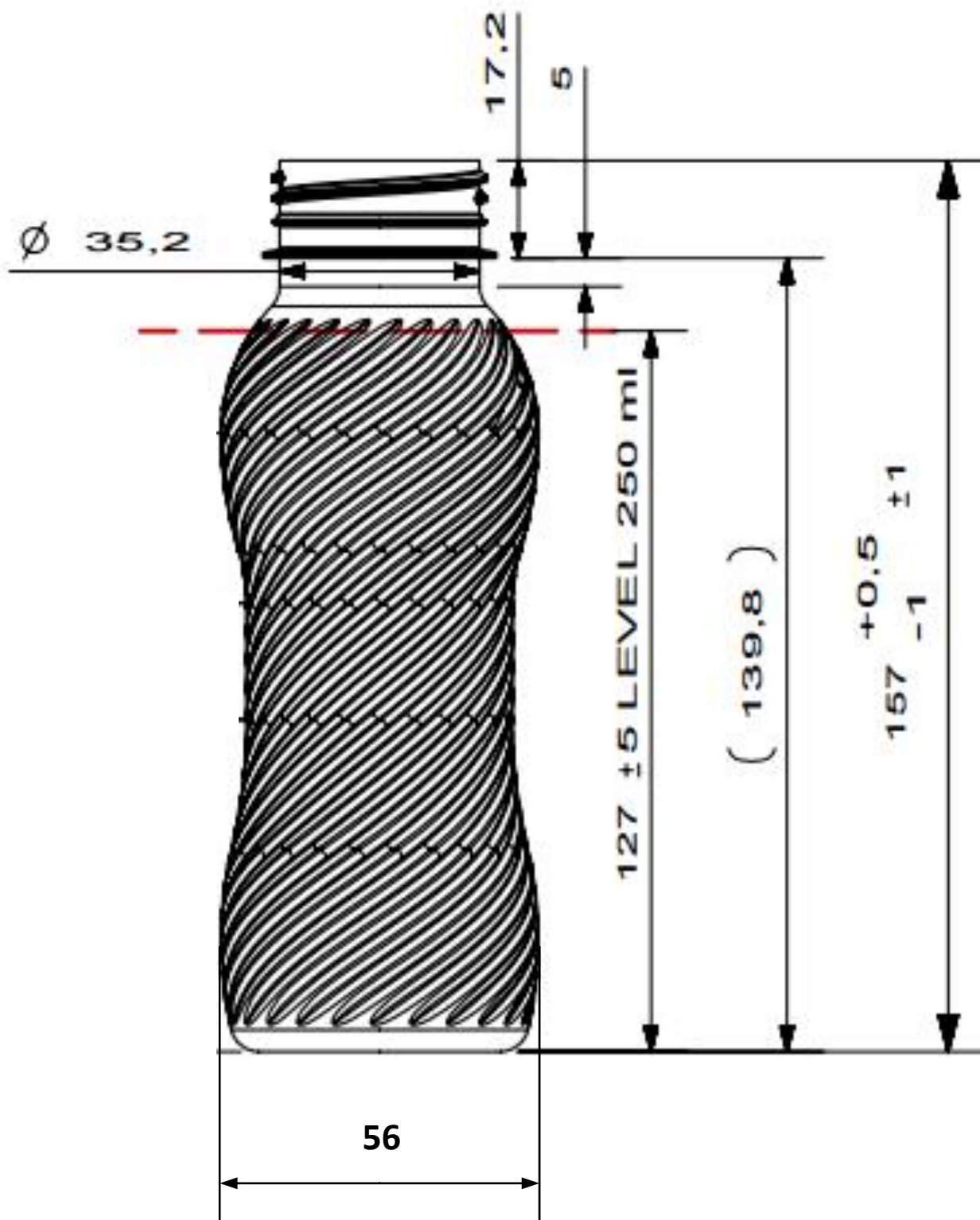
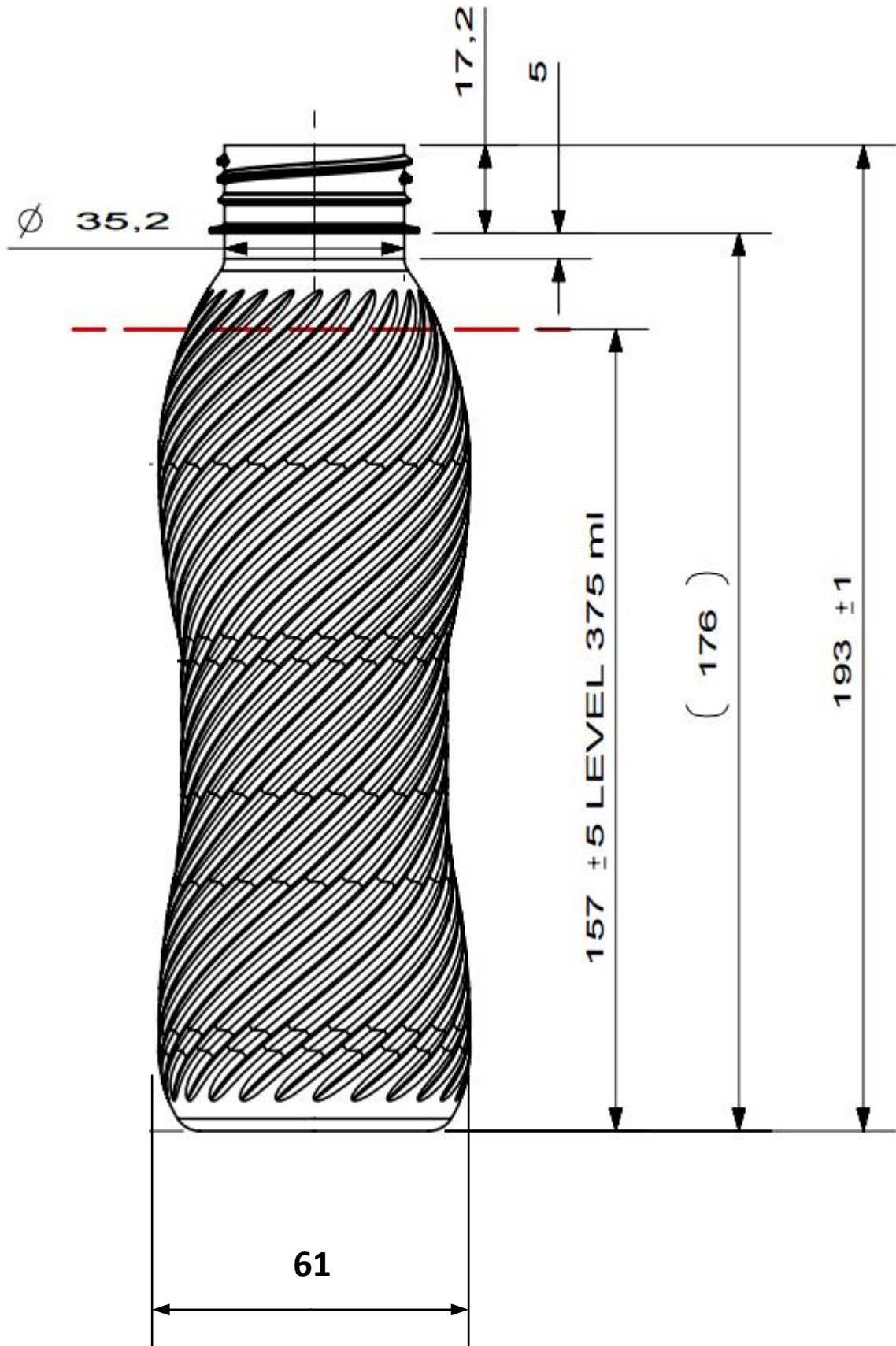
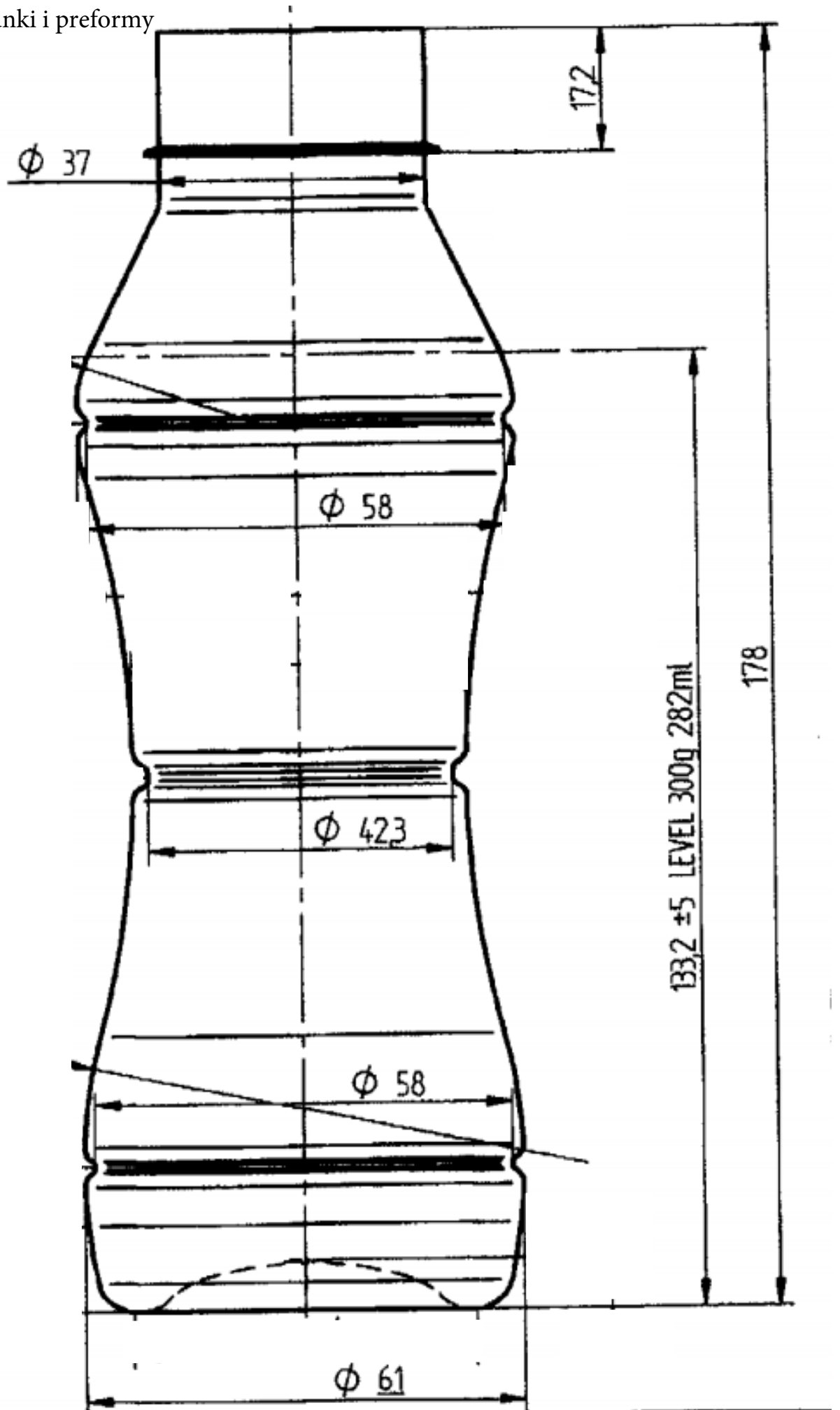


Załącznik nr 7 Rysunki i preformy



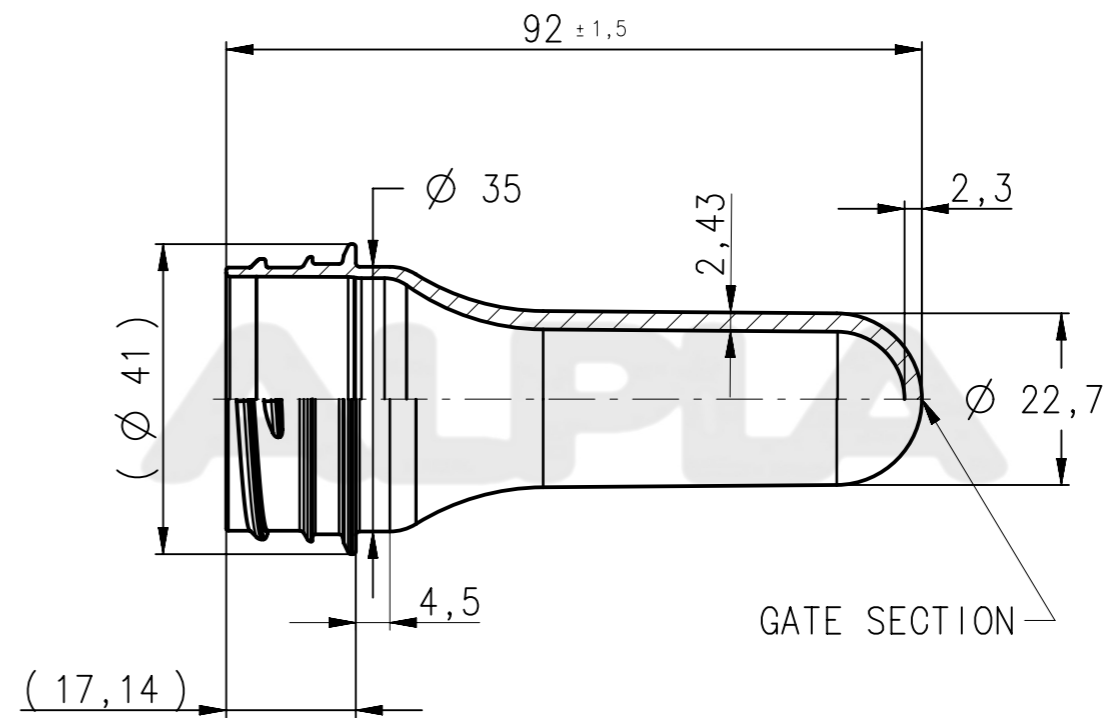
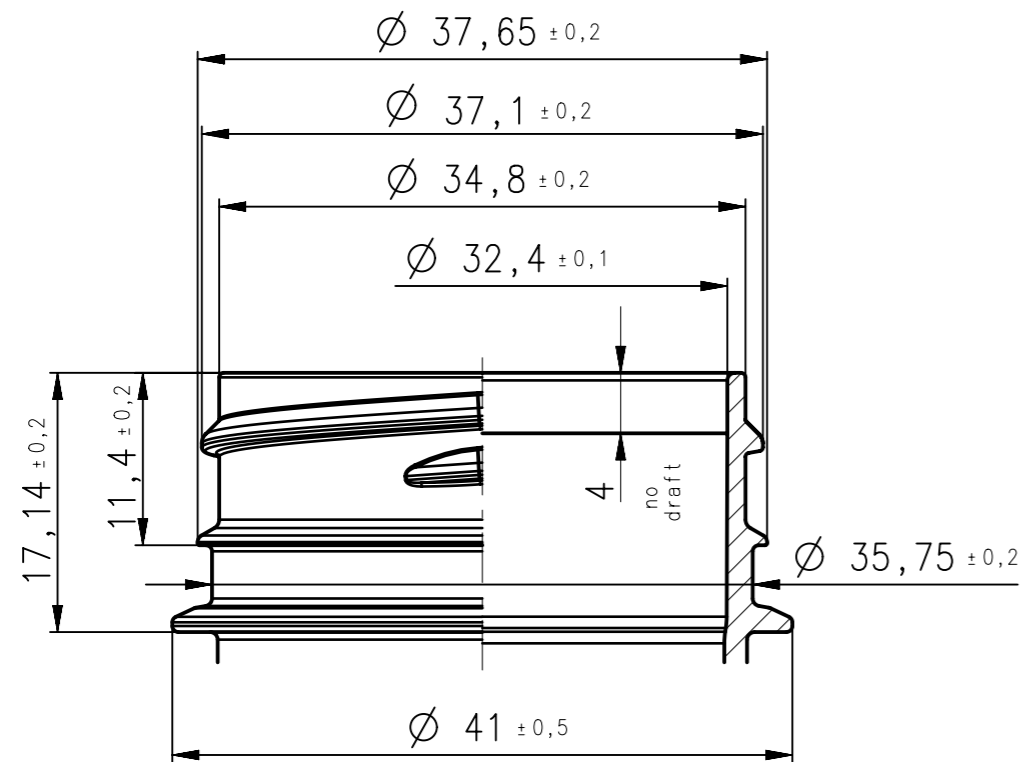
Załącznik nr 7 Rysunki i preformy





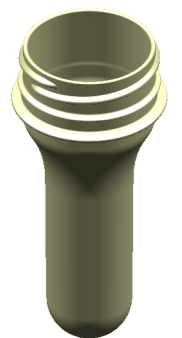
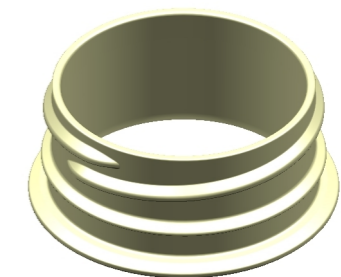
NECK DETAIL: PITCH: 7.264mm  
 SCALE 2:1 TURNS: 0,5 (180°) without  
 start and end of thread  
 STARTS: 2

Załącznik nr 7 Rysunki i preformy




SCALE 1:1

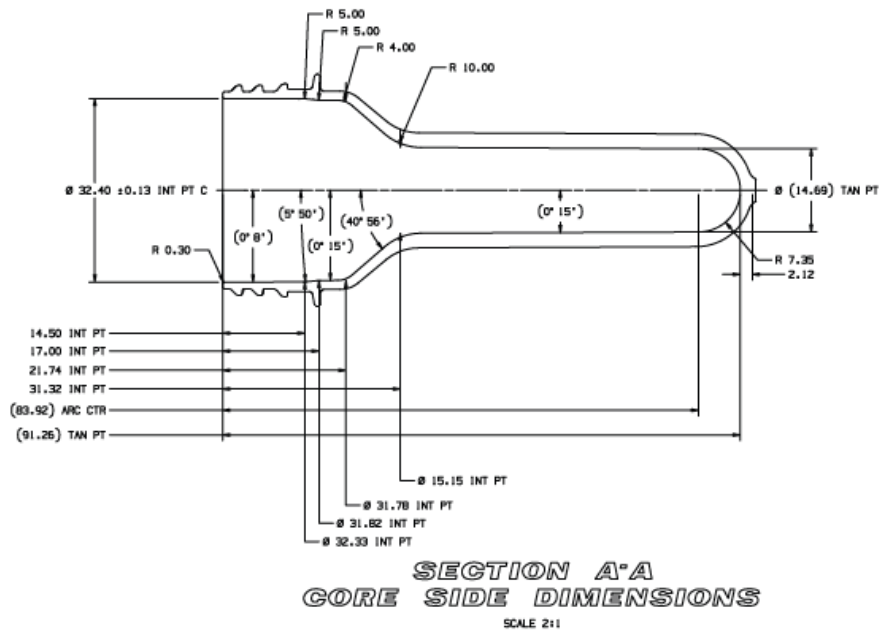
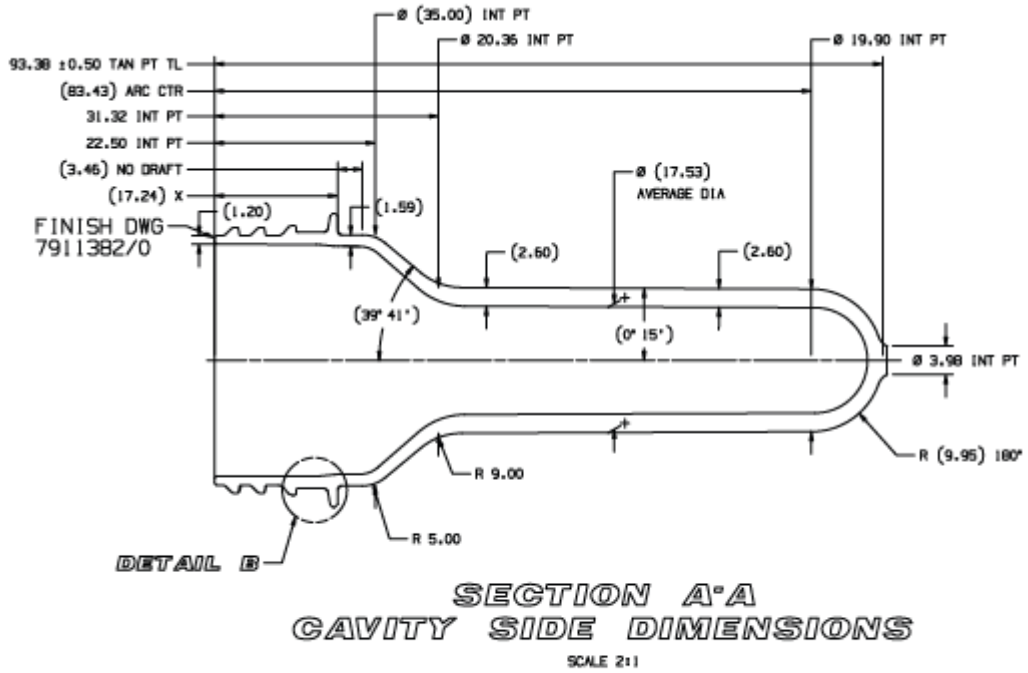
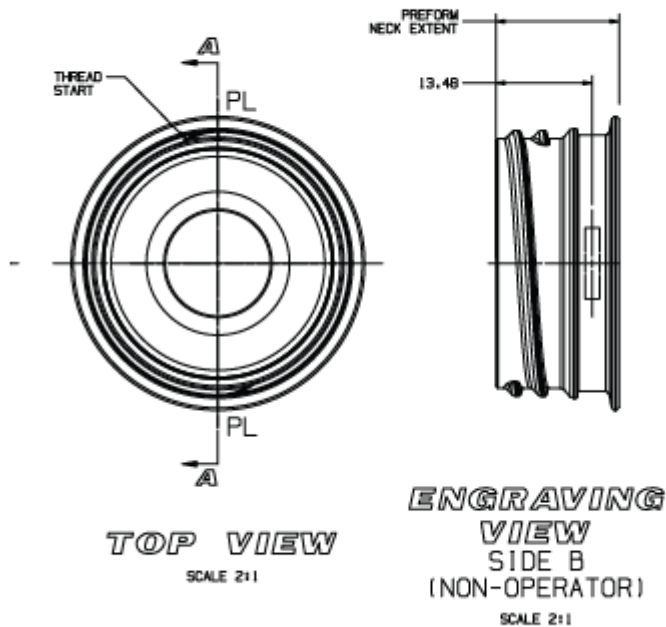
SCALE 1:2



Material: PET  
 Weight:  $20.5 \pm 0.3g$

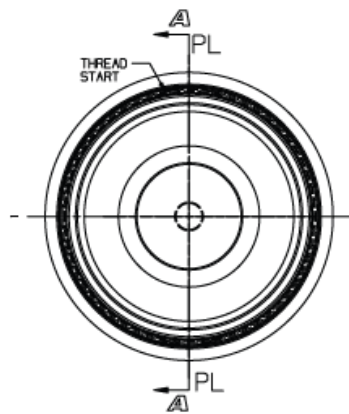
Diameters and ovality directly after injection Testing of the wall thickness and total length of preforms according to Alpha instruction for testing	General Tolerance BLOWMOLDING ARTICLE: DIN ISO 2768-c INJECTION ARTICLE: DIN 16901/150B PREFORM: DIN 16901/130A	Index	Modification:	Name	Date	Index	Modification:	Name	Date
		Scale:		Name	Date				
		1:1		Prepared:	Giesinger Arno				
		2:1 1:2		Reviewed:	HP	17.Jan.17			
ALPLA reserves all rights to the technical IP contained in the document		Supersedes:		Weight: 00kg		Art.No.:		Page: 1 of 1	
Title:		Supersedes by:		Drawing No.:		Revision: 00			
Sales drawing				9406_A28_398_02					
PN_A28.0									

# Załącznik nr 7 Rysunki i preformy



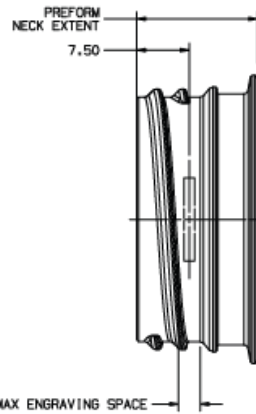
PRODUCT DATA	
ESTIMATED SHRINKAGE	
ESTIMATED PART WEIGHT	19.50 ± 0.20 gr (HUSKY EST)
ESTIMATED NECK WEIGHT	4.53 gr (HUSKY EST)
SPECIFIC GRAVITY	1.335 g/cm <sup>3</sup>
NEUTRAL AXIS HALF-LENGTH	82.52 mm
COMPONENT VOLUME	XXX-XXL
ESTIMATED PART TOTAL AREA	14301 mm <sup>2</sup> (HUSKY EST)
CUSTOMER REF. DRAWING NO.	BODY# N/A THREAD# N/A
MATERIAL	PET

# Załącznik nr 7 Rysunki i preformy



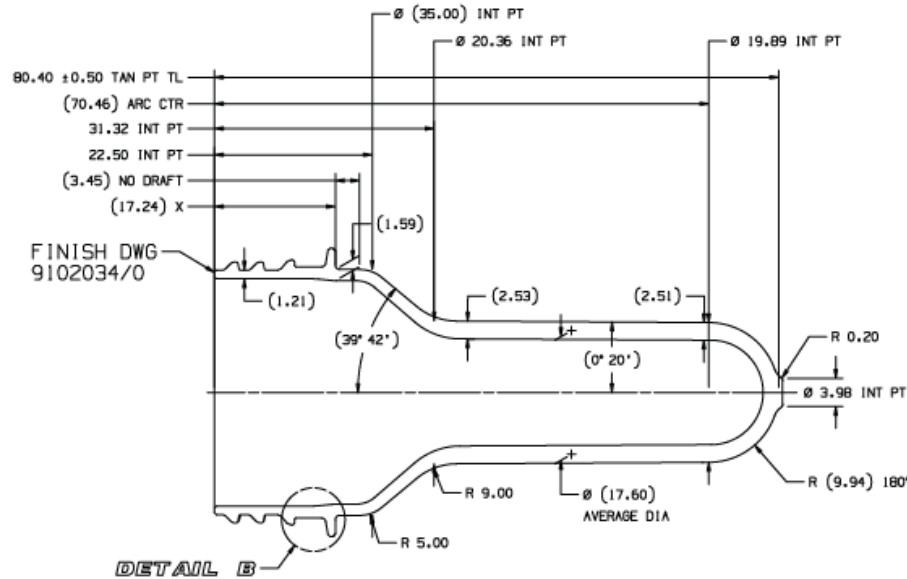
**TOP VIEW**

SCALE 2:1



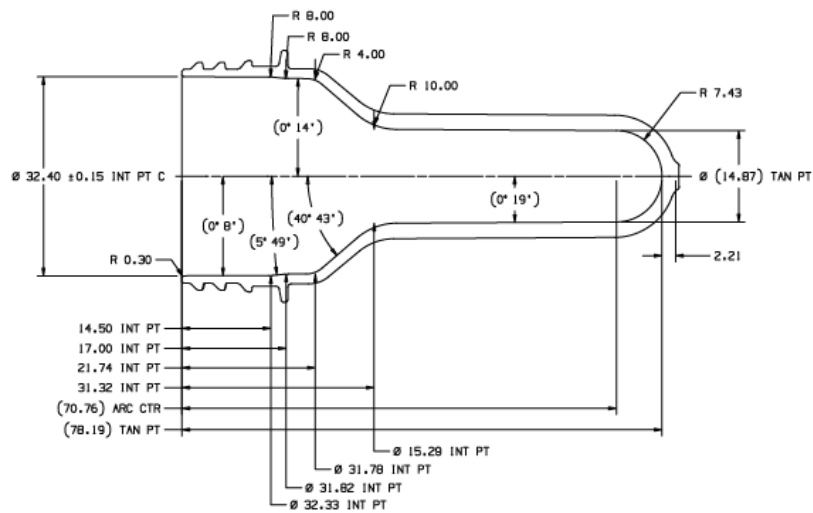
**ENGRAVING VIEW  
SIDE B  
(NON-OPERATOR)**

SCALE 2:1



**SECTION A-A  
CAVITY SIDE DIMENSIONS**

SCALE 2:1



**SECTION A-A  
GORE SIDE DIMENSIONS**

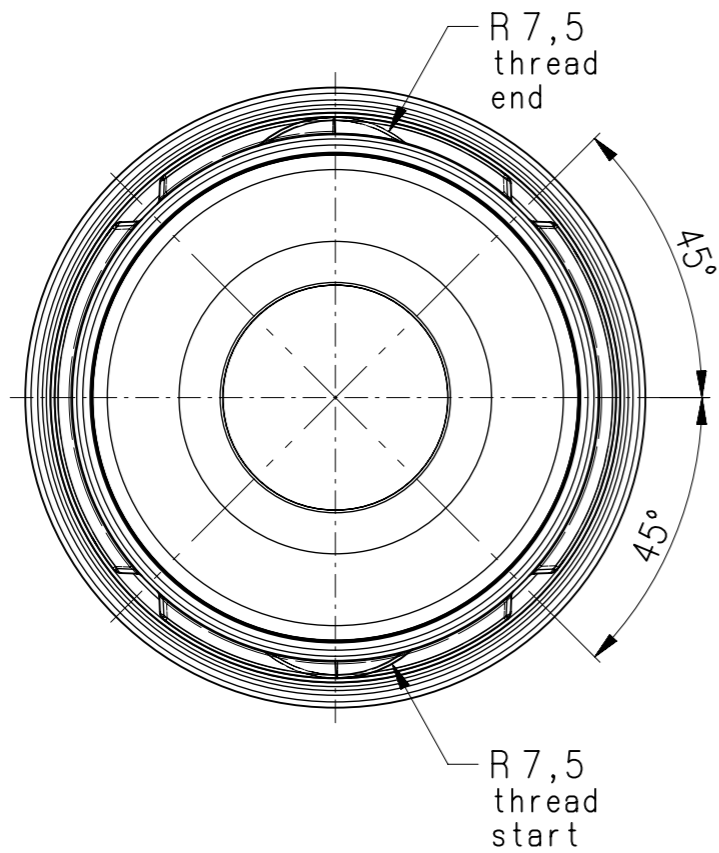
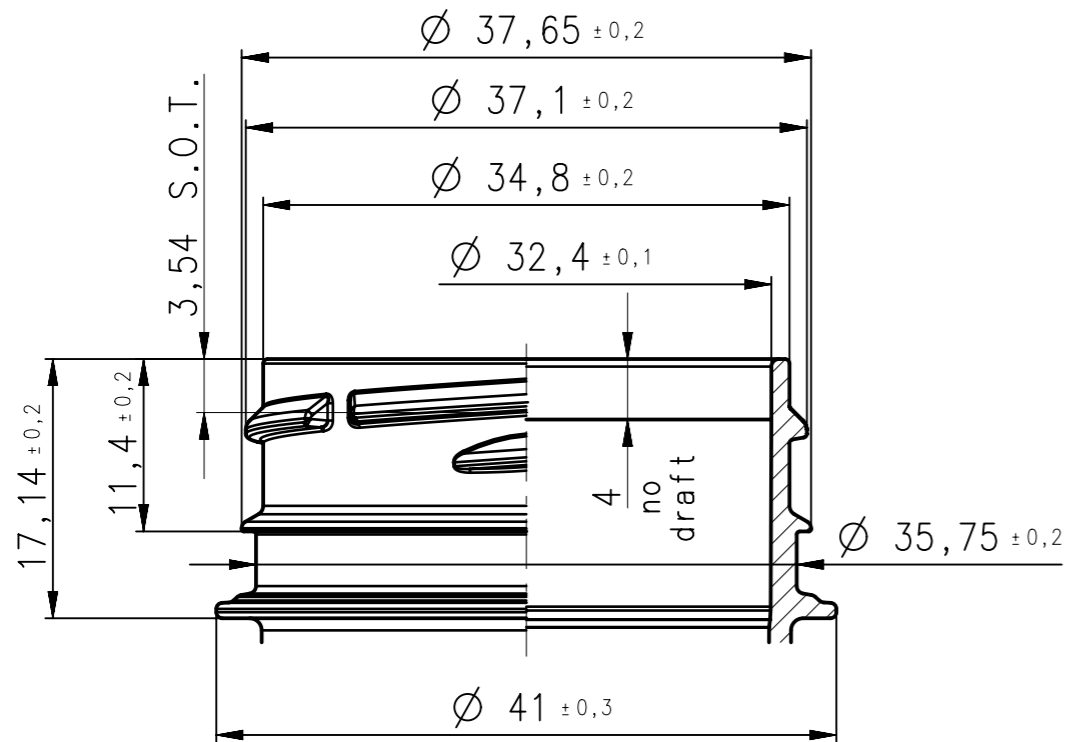
SCALE 2:1

PRODUCT DATA	
ESTIMATED SHRINKAGE	
ESTIMATED PART WEIGHT	16.80 ± 0.20 gr (HUSKY EST)
ESTIMATED NECK WEIGHT	4.54 gr (HUSKY EST)
SPECIFIC GRAVITY	1.335 g/cm <sup>3</sup>
NEUTRAL AXIS HALF-LENGTH	69.54 mm
COMPONENT VOLUME	X.X l
ESTIMATED PART TOTAL AREA	12882 mm <sup>2</sup> (HUSKY EST)
CUSTOMER REF. DRAWING NO.	BODY# 25T-3B/16-BER1-2# THREAD# N/A
MATERIAL	PET

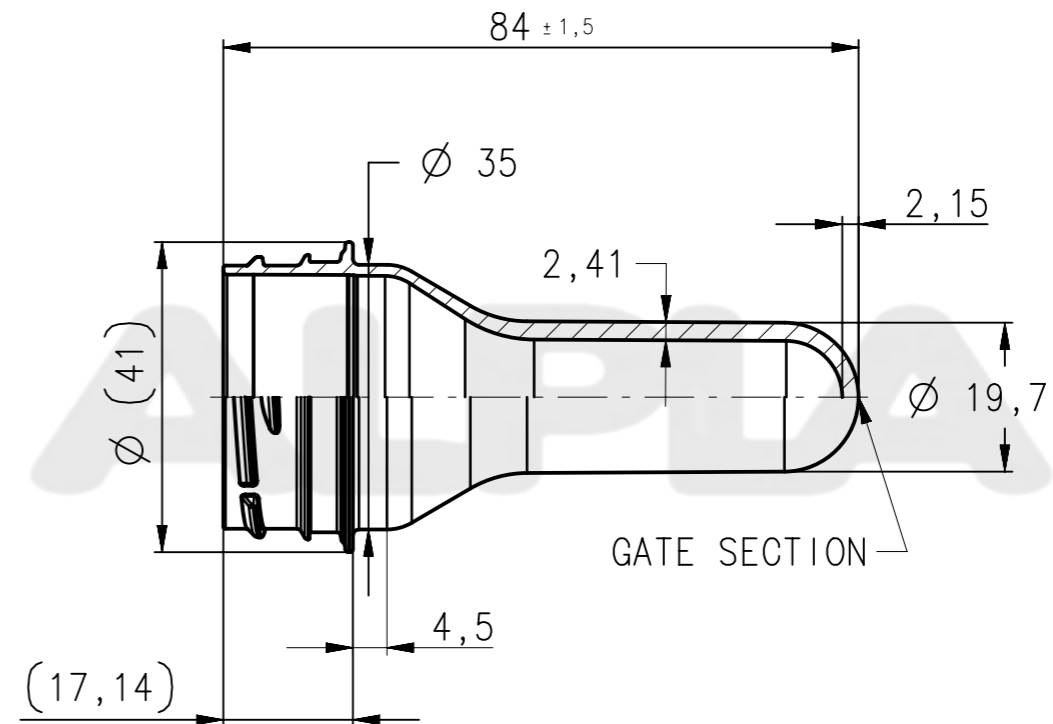


NECK DETAIL:  
SCALE 2:1

PITCH: 7.264mm  
TURNS: 0,5 (180°) without start and end of thread  
STARTS: 2

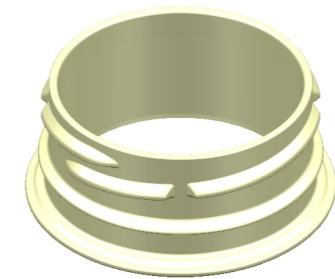


Załącznik nr 7 Rysunki i preformy




SCALE 1:1

SCALE 1:2



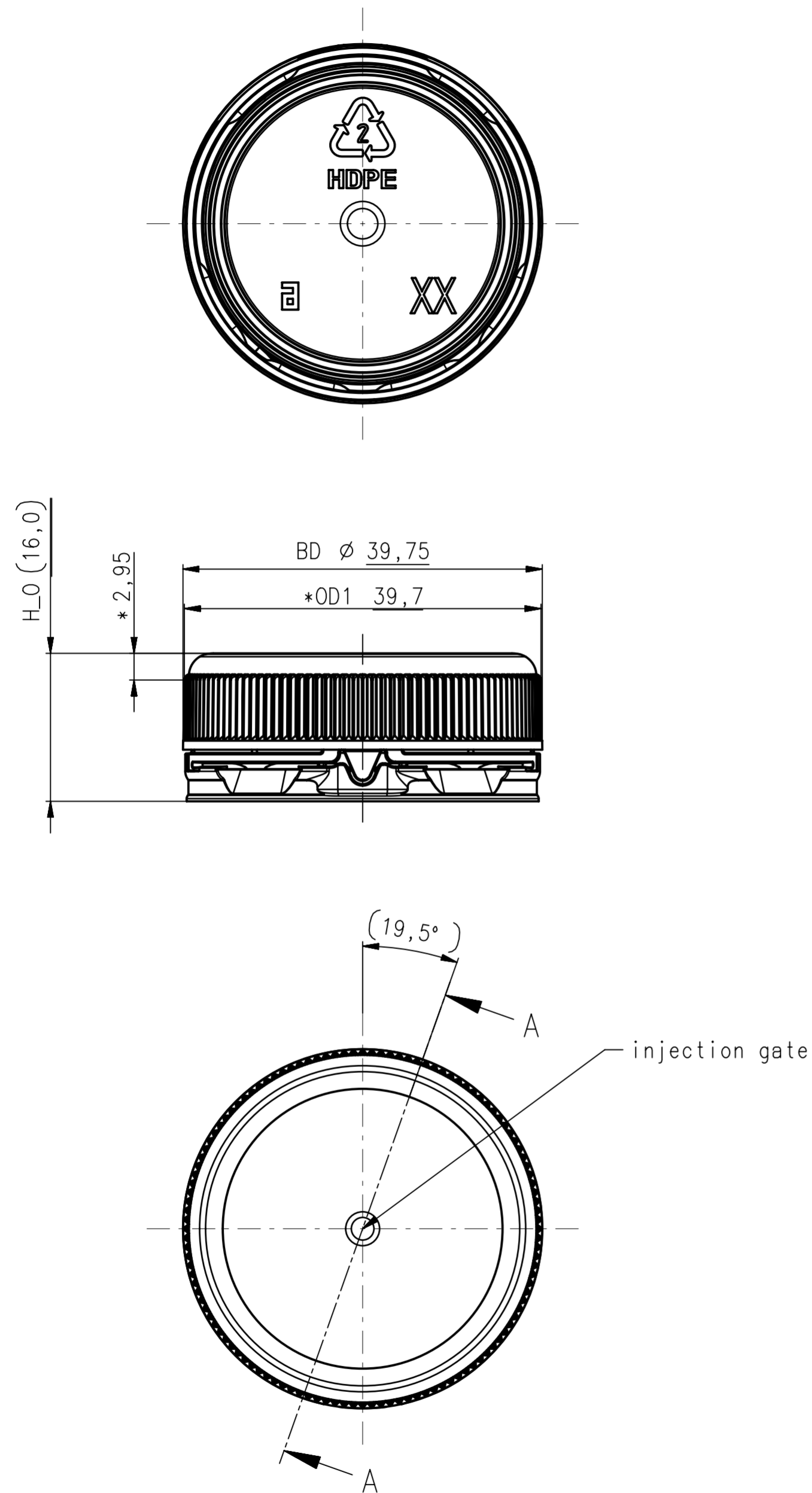
Material: PET  
Weight: 16.5 ± 0.3g

Index		Modification:		Name	Date	Index		Modification:		Name	Date
Scale:		1:1		Name		Date					
		2:1 1:2		Prepared: Giesinger Arno		12.Sep.22					
				Reviewed: GA		12.Sep.22					
ALPLA reserves all rights to the technical IP contained in the document				Supersedes:				Art.No.:			
				Superseded by:				Page: 1 of 1			
				Weight: -- kg				Revision: 00			
Title:						Drawing No.:					
Sales drawing						9416_M93_436_02					
PPN_M93.0											

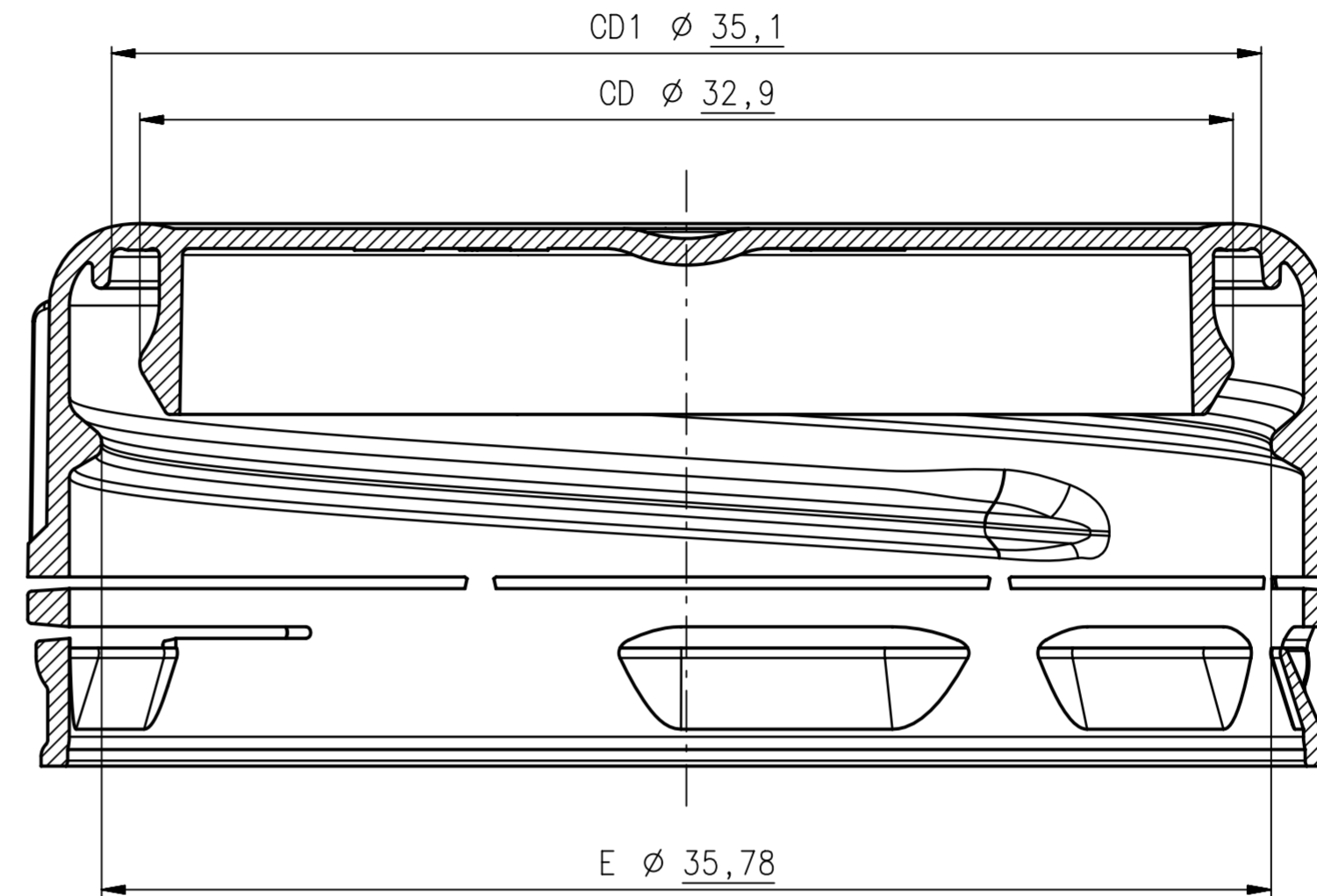
Diameters and ovality directly after injection  
 Testing of the wall thickness and total  
 length of preforms according to Alpha  
 instruction for testing

General Tolerance  
 BLOWMOLDING ARTICLE: DIN ISO 2768-c  
 INJECTION ARTICLE: DIN 20457/TG7-W  
 PREFORM: DIN 20457/TG6-NW

# Załącznik nr 7 Rysunki i preformy



SECTION A-A  
SCALE 5:1  
view turned by 19,5°



Surface area (migration test): 1458.98mm<sup>2</sup>

### THREAD DETAIL:

PITCH: 7,26mm  
TURNS: 0,7  
2 START THREAD  
spacing between thread profile: 3,63 (7,26/2)

\*measuring point

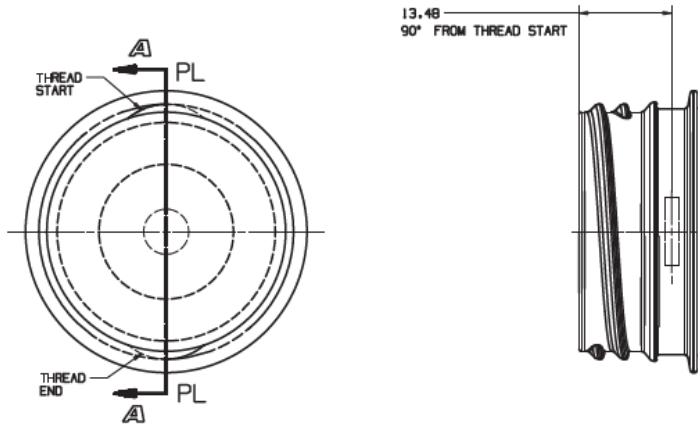


ALPLA to reserve the right to modify the drawing after part sampling

Index	Modification:	Name	Date	Index	Modification:	Name	Date
-	-	-	-	-	-	-	-
Scale: 2:1 5:1/1:1		Name Prepared: Dangl Matthias Reviewed:	Date 28.Oct.22	<b>ALPLA</b>			
ALPLA reserves all rights to the technical IP contained in the document		Supersedes: Superseded by: Weight: 00kg	Art.No.:				
Title: ASC 38 2Start Tethered tethered soul V7				Drawing No.: 9301_021_095_01_C1 Revision: 00			



# Załącznik nr 7 Rysunki i preformy

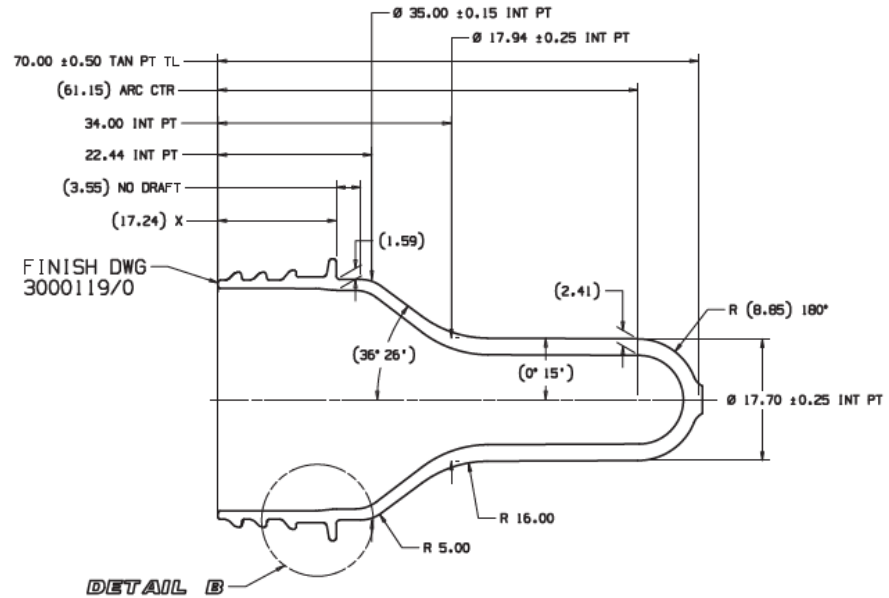


**TOP VIEW**

SCALE 2:1

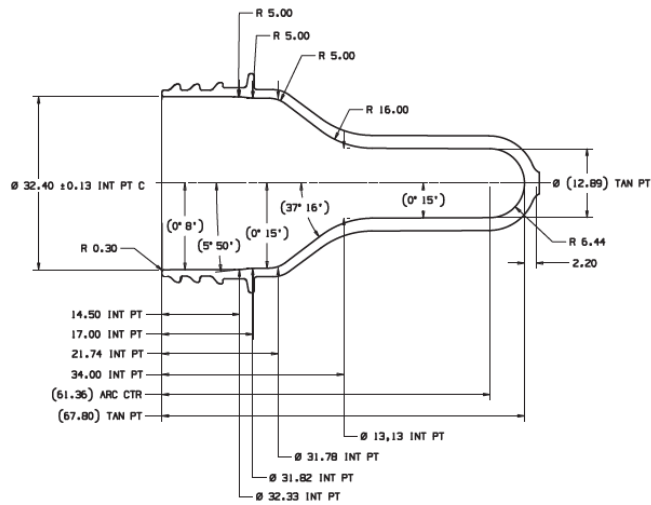
**ENGRAVING VIEW**

SCALE 2:1



**SECTION A-A  
CAVITY SIDE DIMENSIONS**

SCALE 2:1



**SECTION A-A  
CORE SIDE DIMENSIONS**

SCALE 2:1

PRODUCT DATA	
ESTIMATED SHRINKAGE	
ESTIMATED PART WEIGHT	13.8 ± 0.2 gr (HUSKY EST)
SPECIFIC GRAVITY	1.335
COMPONENT VOLUME	X.X l
CUSTOMER DRAWING NO.	BODY# THREAD#
MATERIAL	PET
JOB #:	309826
MOLD #:	309581
PROJECT ENGINEER:	N.TZOURIDIS